

Quality Irrigation Products



UMC is a ISO 9001:2015
Certified Company



Irrigation Solutions

2920 Airway Ave, Costa Mesa, Ca. 92626
phone: 714.437.9600 / www.umcproducts.com



Features and Benefits

The UMC® Standard Coupler is designed to connect the center drive gear motor to the final drive gearboxes. In addition to connecting these critical drive train components the coupler acts as both a torque dampener to absorb start up torque from the gear motor and as a fuse to protect the other critical drive train components in an overload condition.

- ▶ Shock-attenuating puck insert ensures smoother starts and stops, extending the lifespan of the final drive gearbox
- ▶ Acts as a fuse to safeguard other critical powertrain components during overload conditions
- ▶ Alignment rod secures the insert and maintains alignment under extreme loads

Driveline Couplers

Standard Coupler

Designed to connect and protect the center drive gear motor and final drive gearboxes

The UMC® Standard Coupler is a shock-attenuating drive connection between the center drive gear motor and final drive gearbox. It has been the industry standard for over 30 years on new systems from Original Equipment Manufacturers. It is available in a variety of sizes and configurations to fit any brand of center pivot.

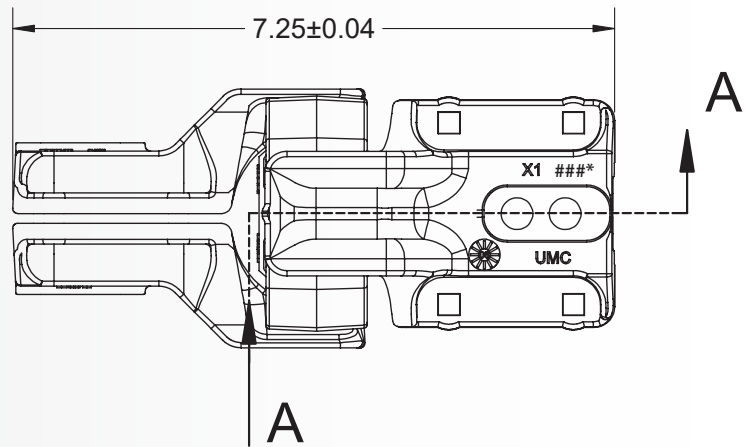
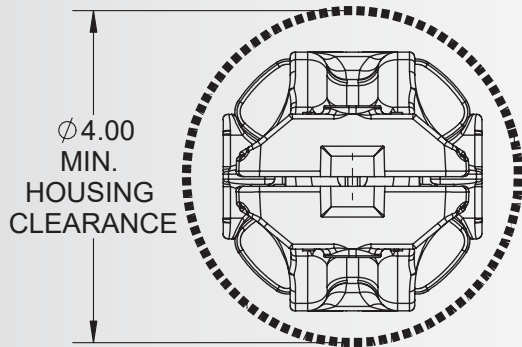
Part Number	Description
01355-121I	1 1/8" rd. x 1" sq.
01355-121J	1" rd. x 1" sq.
01355-121M	1" rd. x 7/8" sq.
01355-121M-U	1" rd. x 7/8" sq. USA
01355-121P	1" rd. x 3/4" sq.
01355-121P-U	1" rd. x 3/4" sq. USA

- ▶ Urethane insert offers superior UV and chemical resistance, ensuring environmental stability
- ▶ Grooved insert option easily converts any coupler for towable applications
- ▶ UMC SQUEX-bolts (Square-Neck, Hex-Head) feature a unique anti-rotation design, enabling quick, single-wrench assembly
- ▶ Curved insert pressure pads adjust for misalignment, ensuring optimal performance
- ▶ Proven reliability with over 30 years of successful use

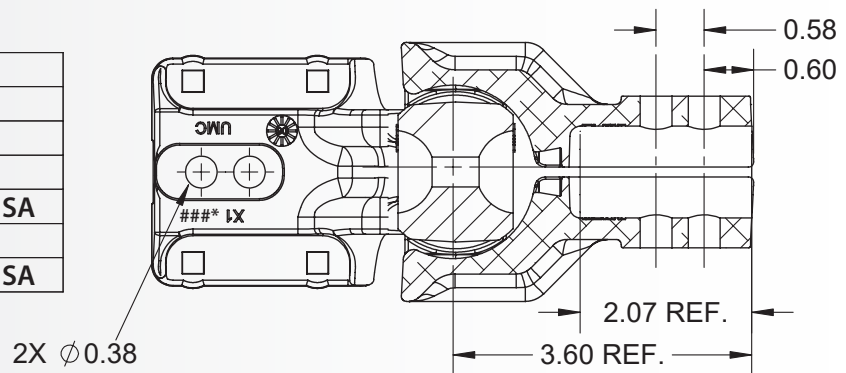
sales@umcproducts.com

Universal Motion Components®

Dimensional Drawing Standard Coupler

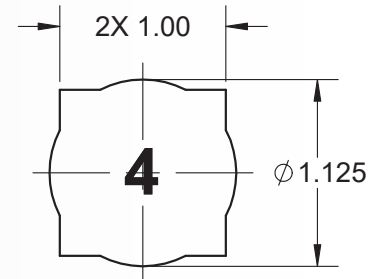
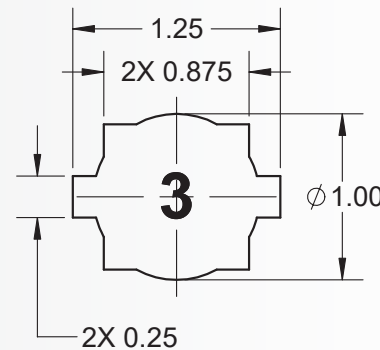
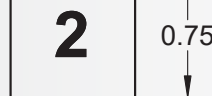
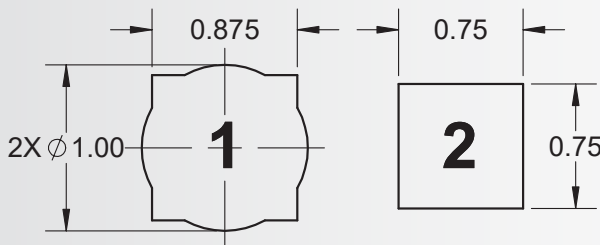


PART NO.	END TYPE
01355-121I	#4 / #4
01355-121J	#1 / #4
01355-121M	#1 / #1
01355-121M-U*	#1 / #1 USA
01355-121P	#2 / #3
01355-121P-U*	#2 / #3 USA



SECTION A-A

END TYPES



UNIVERSAL
MOTION
COMPONENTS



sales@umcproducts.com

Universal Motion Components, Co. Inc.
2920 Airway Ave, Costa Mesa, Ca. 92626
714-437-9600 / sales@umcproducts.com
www.umcproducts.com