

15x23 20-Bolt Series Oval - Manholes

UMC's complete line of multi-bolt manholes serves as a great inexpensive option for applications where frequent access is not required. Ideal for tank top covers, fuel and water tank access, inspection access to ship voids, barges, sanitary and digester tanks, clean outs and more. These water-tight manholes feature simple designs and utilize high strength steel.

UMC offers a complete line of manholes with configurations and hardware combinations to meet your requirements. These industry-standard manholes are used on workboats, and equipment worldwide. UMC's simply-designed manholes have served the industrial marine and fishing industries for the past 30 years.

FEATURES:

- High strength carbon steel construction
- Hardware combinations of dissimilar metal prevent galling and corrosion (Not available on all models - see Manhole Matrix for details)
- High-quality neoprene rubber gaskets ensure water-tight seal (oil resistant Buna-N Optional)
- Neoprene Gasket material is UV resistant to prevent cracking and memory fatigue
- Flush screw-down models offer a smooth-surfaced manhole that prevents catching and snagging
- Speciality features such as 3" NPT fill points and handles available on some models
- Raised coamings available on certain models

For more details about all of the manholes available please see the complete feature set matrix available on the technical drawing.



Model: 08866-101F - Flush Screw



Model: 08866-101S - Weld Stud



Model: 02590-101A - Weld Stud, Combo B



Model: 08866-101Z - Weld Stud, Combo A



Model: 02570-101A- Raised Combing, Combo B
See Additional Models on Manhole Matrix. (P. 18)

Manholes



Universal Motion Components

Marine Hardware Division

15x23 26 Bolt Series Oval - Manholes

26 bolt manholes are another industry standard model offered by UMC Marine. Typically used for specific application of increased air or water pressure. All of our manholes meet the ABS (American Bureau of Shipping) requirements for design and materials.



Model: 02610-101A - Flush Screw, 26 Bolt
See Additional Models on Manhole Matrix. (p. 18)

18x24 24 Bolt Series Oval - Manholes

The 18" x 24" manholes feature many of the same configuration and hardware combinations featured on the standard size manhole. See the complete line of 18" x 26" manholes on the manhole product matrix. (P. 40)



Model: 02600-101A - Weld Bolt, Combo B
See Additional Models on Manhole Matrix. (p. 18)

14" & 18" Round Series Round - Clean-Out Hatches

The round manholes are also sometimes referred to as clean-out hatches. These hatches all feature raised coamings available in various heights. See the complete line of these round manholes on the technical drawing page and manhole matrix. (P. 18)

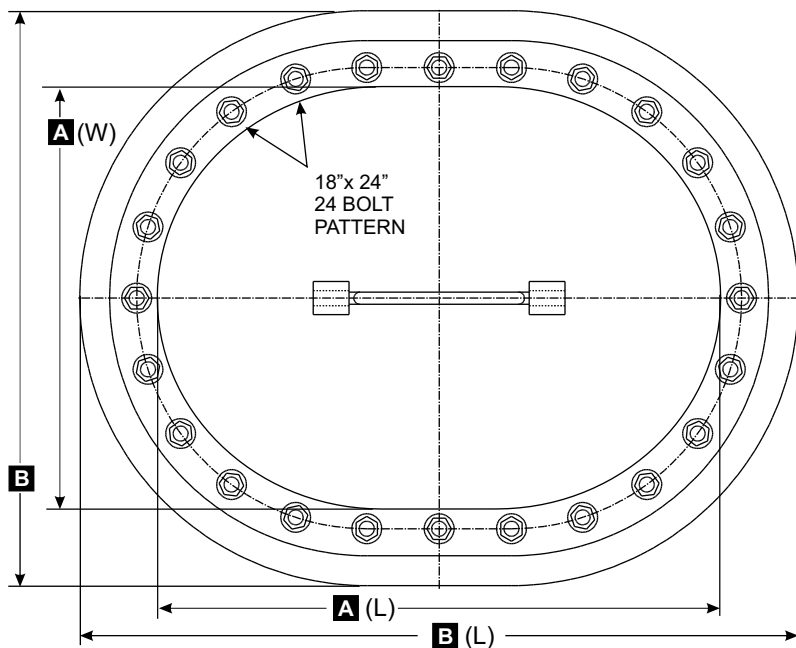
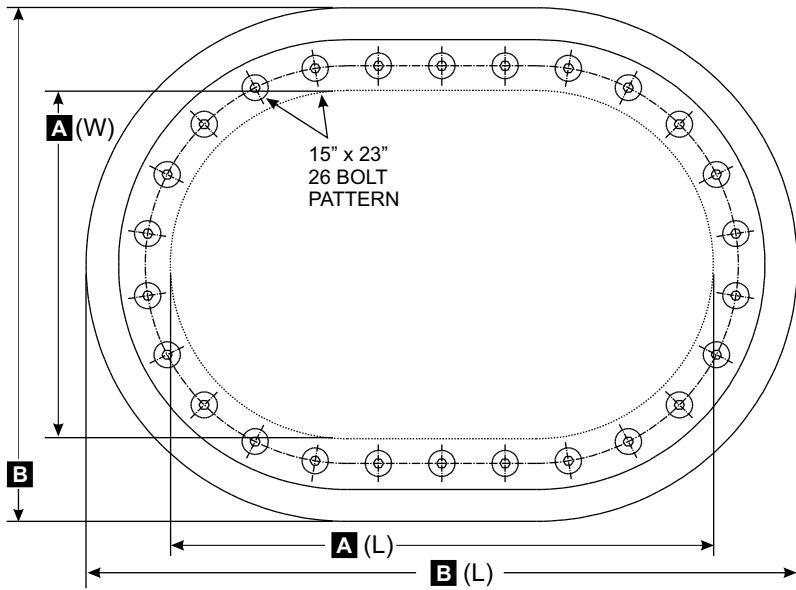
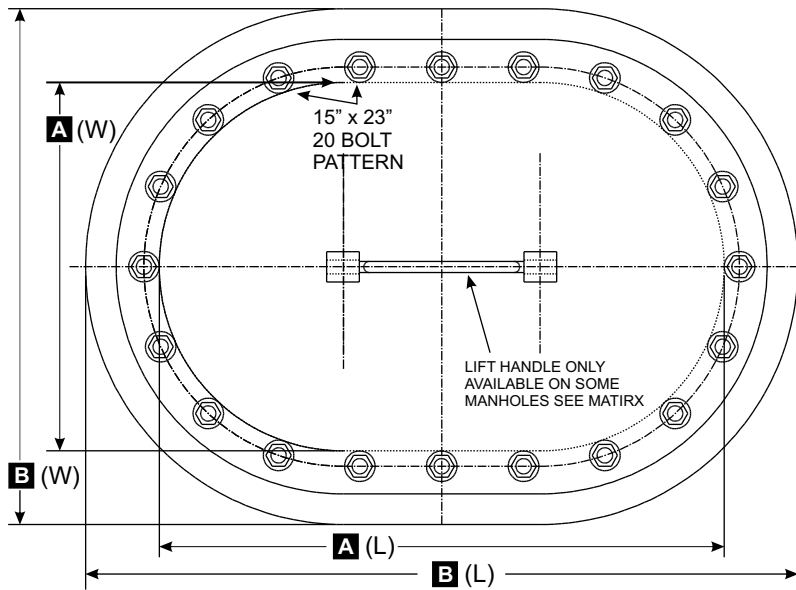


Model: 08451-101A - Raised Coaming, Combo A
See Additional Models on Manhole Matrix. (p. 18)

Standard Hardware Configurations

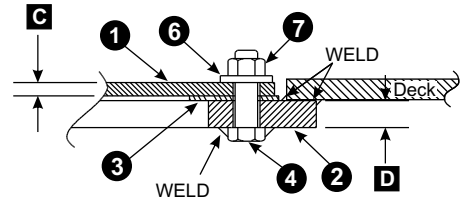
<p>FLUSH SCREW</p> <p>Flush Hex Bolt: Stainless Steel</p> <p>Tapped Steel Ring</p>	<p>WELD BOLT - Combo A</p> <p>Welded Bolt: Stainless Steel</p> <p>Washer: Bronze</p> <p>Nut: Bronze</p>	<p>RAISED COAMING - Combo A</p> <p>Raised Coaming</p> <p>Bolt: Stainless Steel</p> <p>Washer: Bronze</p> <p>Nut: Bronze</p>
<p>WELD STUD</p> <p>Washer: Stainless Steel</p> <p>Nut: Bronze</p> <p>Stud Flush Welded: Stainless Steel</p>	<p>WELD BOLT - Combo B</p> <p>Welded Bolt: Steel</p> <p>Washer: Bronze</p> <p>Nut: Stainless Steel</p>	<p>RAISED COAMING - Combo B</p> <p>Raised Coaming</p> <p>Bolt: Zinc Plated Steel</p> <p>Washer: Bronze</p> <p>Nut: Stainless Steel</p>

Manholes

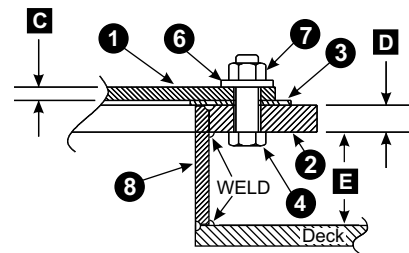


BILL OF MATERIAL: #542-1		
PC.NO.	DESCRIPTION	MATERIAL
1	COVER	STEEL (PRIMED)
2	DECK RING	STEEL (PRIMED)
3	GASKET	BUNA
4	BOLT	SEE MATRIX
5	STUD	SEE MATRIX
6	WASHER	SEE MATRIX
7	NUT	SEE MATRIX
8	COAMING	STEEL (PRIMED)

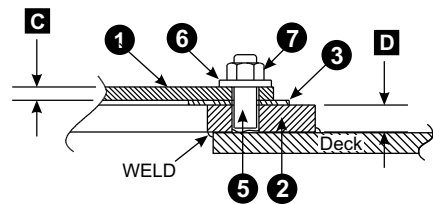
EXAMPLE: WELD BOLT



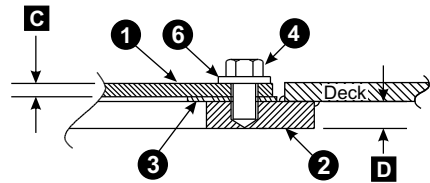
EXAMPLE: NON-WELD



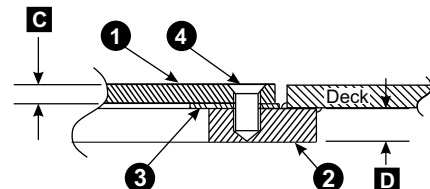
EXAMPLE: STUD WELD



EXAMPLE: TAP RING



EXAMPLE: FLUSH SCREW





714-437-9600
714-437-9700 (FAX)
info@umcproducts.com

UMC MANHOLE COVER
STEEL MULTI-BOLT MANHOLE

DWG. NO. 725



Universal Motion Components

Marine Hardware Division

Manhole Product Matrix

BAIER P/N P/N	DRAWING #	MODEL #	BOLT TYPE	BOLT TYPE	BOLT LGNTH	A(W)	A(L)	B(W)	B(L)	C	D	E	WGHT LBS	BOLT/ STUD	NUT	WSHR	GSKT	HNDL Y/N
15" x 23"	20 Bolt Flush																	
BMHC15X23BZ	02590-101A	UMC-503	WELD BOLT	5/8-11	2.25	15	23	21	29	.393	.787	N/A	95	ZN	SS	BR	BUNA	Y
BMHC15X23DD	02590-103S		TAP RING	5/8-11	1	15	23	21	29	.393	.787	N/A	95	SS		BR	BUNA	N
BMHC15X23BS	02590-105A	UMC-503	WELD BOLT	5/8-11	2.25	15	23	21	29	.393	.787	N/A	95	SS	BR	BR	BUNA	Y
BMHC15X23D	08866-101D		TAP RING	3/4-10	1.375	15	23	21	29	.393	.787	N/A	102	SS		SS	BUNA	N
BMHC15X23F	08866-101F		FLUSH SCREW	1/2-13	.9375	15	23	21	29	.393	.787	N/A	98	SS			BUNA	N
BMHC15X23S	08866-101S		STUD WELD	3/4-10	2.25	15	23	21	29	.393	.787	N/A	104	SS	BR	SS	BUNA	N
15" x 23" w/ 3" NPT	20 Bolt Flush	3" NPT PLUG																
BMHC15X23Z	08866-101Z	RAISED PLUG	STUD WELD	3/4-10	2.25	15	23	21	29	.393	.787	N/A	125	SS	BR	SS	BUNA	N
BMHC15X23Z	08866-101H	FLUSH PLUG	STUD WELD	3/4-10	2.25	15	23	21	29	.393	.787	N/A	125	SS	BR	SS	BUNA	N
15" x 23"	26 Bolt Flush																	
BMHC15X23-26F	02610-101A	UMC-505	FLUSH SCREW	5/8-11	1.25	15	23	22	30	.51	1.125	N/A	160	SS			BUNA	N
BMHC15X23-26D	02590-102SA		TAP RING	5/8-11	1	15	23	21	29	.393	.787	N/A	95	SS		BR	BUNA	N
15" x 23"	20 Bolt Raised																	
BMHC15X23X2.5BZ	02570-101A	UMC-501	NON WELD	5/8-11	1.75	15	23	20	28	.393	.375	2.5	85	ZN	SS	BR	BUNA	N
BMHC15X23X4BS	02570-105A		NON WELD	5/8-11	1.75	15	23	20	28	.393	.375	4	95	SS	BR	BR	BUNA	N
18" x 24"	24 Bolt Flush																	
BMHC18X24BZ	02600-101A	UMC-504	WELD BOLT	5/8-11	2.25	18	24	24	30	.393	.787	N/A	112	ZN	ZN	BR	BUNA	Y
18" x 24"	24 Bolt Raised																	
BMHC18X24X2.5BZ	02580-101A	UMC-502	NON-WELD	5/8-11	1.75	18	24	23	29	.393	.375	2.5	106	ZN	SS	BR	BUNA	N
18" Round	Raised																	
BMHC18BR	08450-101A	UMC-154-18	NON WELD	5/8-11	2	18	18	23	23	.393	.393	2.5	78	ZN	BR		BUNA	N
BMHC18SS-FLAX	08450-101B	UMC-154-18	NON WELD	5/8-11	2	18	18	23	23	.393	.393	2.5	78	SS	SS		FLAX	N
BMHC18SS	08450-102B	UMC-154-18	NON WELD	5/8-11	2	18	18	23	23	.393	.393	2.5	78	SS	SS		NONE	N
BMHC18SS-9	08450-121B	UMC-154-18	NON WELD	5/8-11	2	18	18	23	23	.393	.393	9	85	SS	SS		FLAX	N
14" Round	Raised																	
BMHC14BR	08451-101A	UMC-154-14	NON WELD	5/8-11	2	14	14	19	19	.393	.393	2.5	55	ZN	BR		BUNA	N
BMHC14BR-FLAX	08451-101B	UMC-154-14	NON WELD	5/8-11	2	14	14	19	19	.393	.393	2.5	55	SS	SS		FLAX	N
BMHC14SS	08451-102B	UMC-154-14	NON WELD	5/8-11	2	14	14	19	19	.393	.393	2.5	55	SS	SS		BUNA	N
BMHC14SS-4.5	08451-112B	UMC-154-14	NON WELD	5/8-11	2	14	14	19	19	.393	.393	4	68	SS	SS		BUNA	N
10" Round	12 Bolt Flush																	
BMHC10U	08866-110A		WELD BOLT	5/5-11	2.25	10	10	16	16	.393	.787	N/A	48	SS	BR	SS	BUNA	N

Manholes