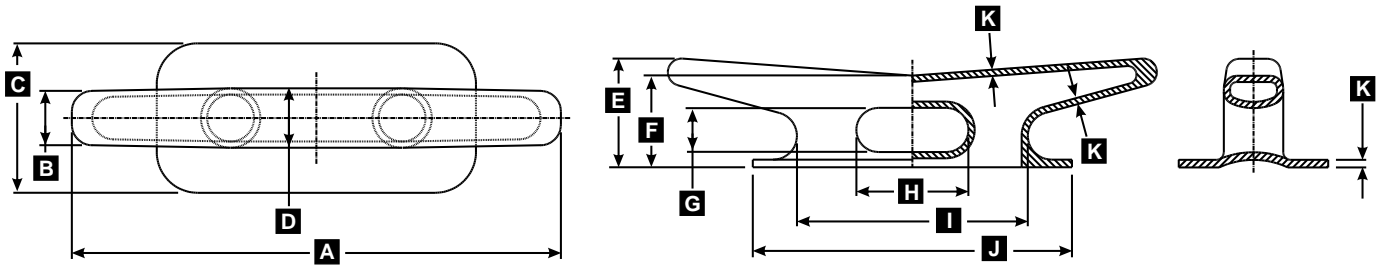




# Universal Motion Components

## Marine Hardware Division

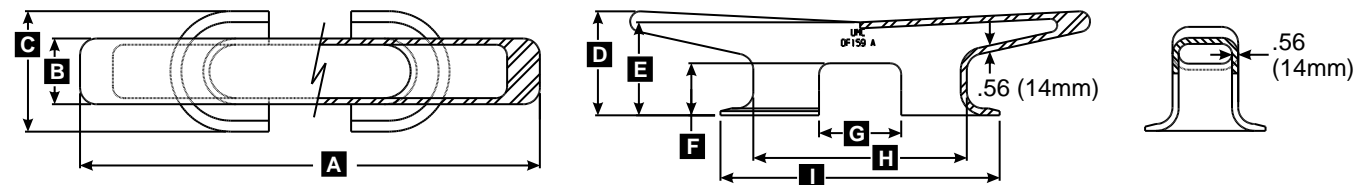
### Kevel Chocks ASTM A27-70-36 Cast Steel



MODEL	DESCRIPTION	PART #	DIMENSIONS IN INCHES (MM)										LBS (KGS)	
			A	B	C	D	E	F	G	H	I	J		K
UMC-30	KEVEL CHOCK, 24"	02990-301A	24" (610)	3" (76)	7.5" (190)	4" (101)	5.63" (143)	5.13" (130)	2.25" (57)	3.25" (83)	9" (229)	10.5" (267)	.5" (13)	50 (23)
UMC-KC30	KEVEL CHOCK, 30"	01081-301A	30" (762)	3.25" (83)	9.5" (241)	4" (101)	7" (178)	5.62" (143)	2.38" (60)	6.88" (175)	14" (356)	20.25" (514)	.5" (127)	75 (34)
UMC-482	KEVEL CHOCK, 36"	01080-301A	36" (914)	4" (101)	11" (279)	5" (127)	8" (203)	6.75" (171)	3.25" (83)	8.25" (210)	17" (432)	23.5" (572)	.56" (127)	98 (44)
UMC-483	KEVEL CHOCK, 42"	01090-301A	42" (1066)	4.75" (121)	12.5" (318)	6" (152)	9" (229)	7.88" (200)	4.13" (104)	9.63" (245)	20" (508)	26.75" (679)	.53" (13)	168 (76)
UMC-484	KEVEL CHOCK, 48"	01100-301A	48" (1219)	5.5" (140)	14" (356)	7" (178)	10" (254)	9" (229)	5" (127)	11" (279)	23" (584)	30" (762)	.65" (17)	220 (100)

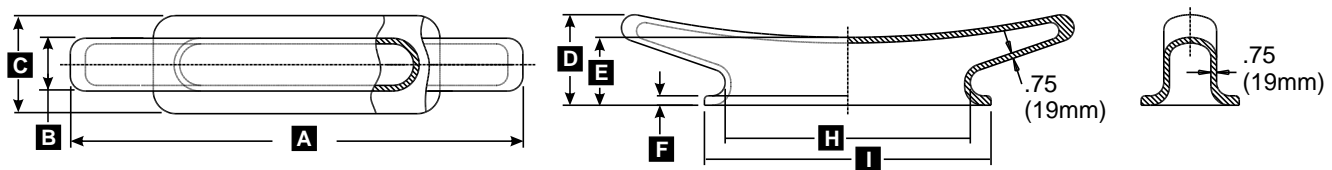
Castings

### Large Kevels ASTM A27-70-36 Cast Steel



MODEL	DESCRIPTION	PART #	DIMENSIONS IN INCHES (MM)								LBS (KGS)	
			A	B	C	D	E	F	G	H		I
UMC-48A	KEVEL, 36"	01050-301A	36" (914)	5" (127)	10" (254)	7.13" (181)	5.88" (149)	3.5" (89)	5" (127)	16.5" (419)	22.5" (572)	81 (37)
UMC-36A	KEVEL, 42"	01060-301A	42" (1067)	6" (152)	11" (279)	7.5" (191)	6.5" (165)	3.25" (83)	7.5" (191)	19.5" (495)	25.5" (648)	114 (52)
UMC-159A	KEVEL, 48"	01070-301A	48" (1219)	6.5" (165)	11" (279)	10" (254)	8.75" (222)	5" (127)	8" (203)	21" (533)	27" (686)	175 (79)

### X-Large Kevels ASTM A27-70-36 Cast Steel



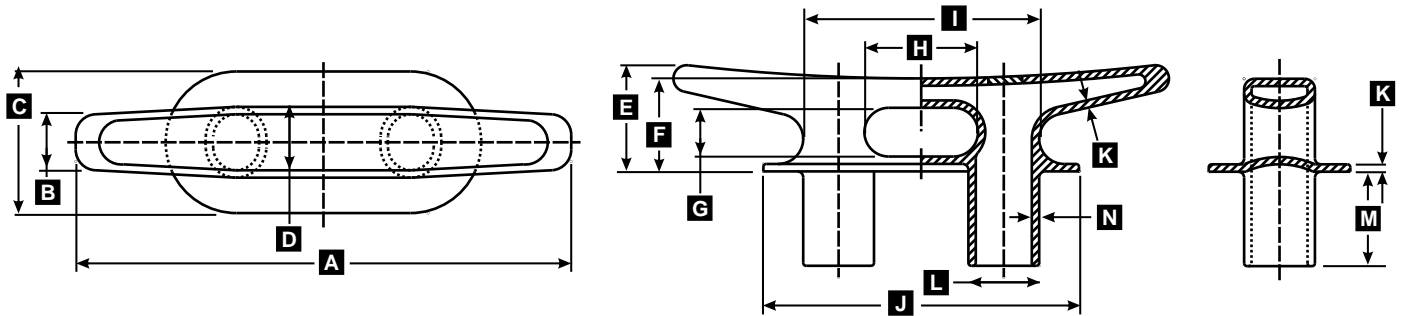
MODEL #	DESCRIPTION	PART #	DIMENSIONS IN INCHES (MM)							LBS (KGS)		
			A	B	C	D	E	F	G		H	I
UMC-KC60	KEVEL, 60"	01101-301A	60" (1524)	7" (178)	11.5" (292)	12" (305)	9" (229)	1.25" (32)	N/A" (N/A)	32.5" (826)	38" (965)	390 (177)



# Universal Motion Components

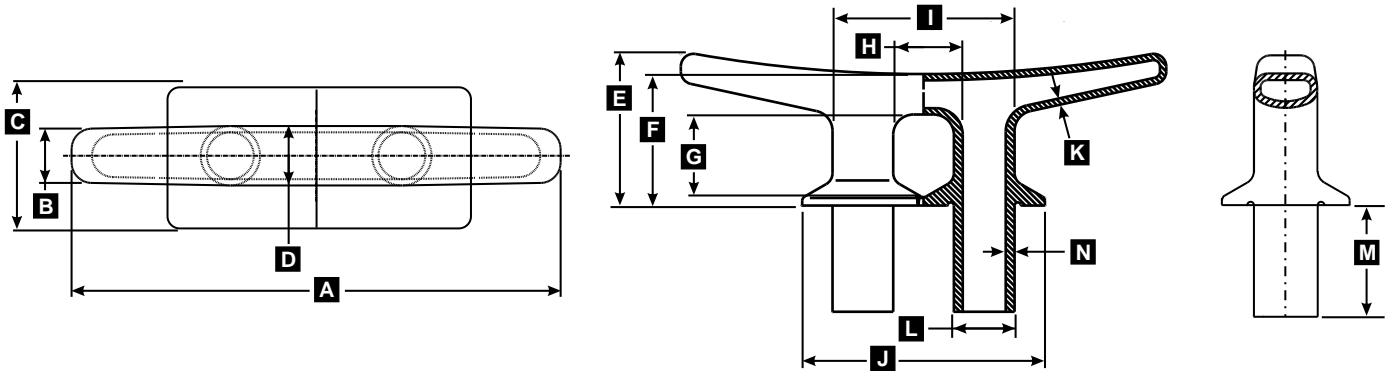
## Marine Hardware Division

### Kevel Chock, 42" Thru deck ASTM A27-70-36 Cast Steel



MODEL	DESCRIPTION	PART #	DIMENSIONS IN INCHES (MM)													LBS (KGS)	
			A	B	C	D	E	F	G	H	I	J	K	L	M		N
01091-301A	Kevel Chock 42" THRU DECK		42" (1067)	4.75" (121)	12" (305)	6" (152)	9" (229)	7.88" (200)	4.13" (105)	9.63 (245)	20" (508)	26.75" (679)	.63" (16)	6" Ø (152)	8" (203)	.63" (16)	220 (99.7)

### Kevel Chock, 48" Thru deck ASTM A27-70-36 Cast Steel



MODEL	DESCRIPTION	PART #	DIMENSIONS IN INCHES (MM)													LBS (KGS)	
			A	B	C	D	E	F	G	H	I	J	K	L	M		N
01102-301A	Kevel Chock 48" THRU DECK		48" (1219)	6" (152)	12" (305)	6" (152)	15" (381)	13" (330)	8.25" (210)	6" (152)	18" (457)	24" (607)	.63" (16)	6" Ø (152)	10.5" (267)	.875" (22)	380 (172)

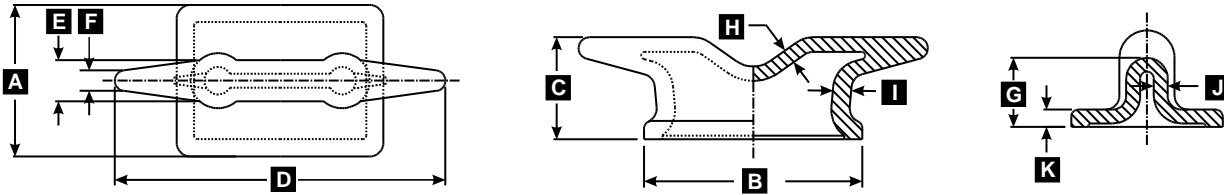
Castings



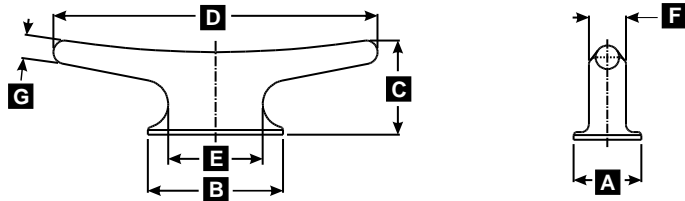
# Universal Motion Components

## Marine Hardware Division

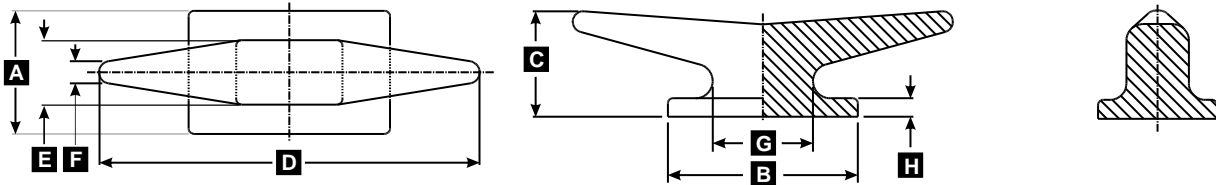
### Small Kevels ASTM A27-70-36 Cast Steel



MODEL	DESCRIPTION	PART #	DIMENSIONS IN INCHES (MM)										LBS (KGS)	
			A	B	C	D	E	F	G	H	I	J		K
UMC-K12B	KEVEL, 12" LARGE BASE	08740-301A	5.5" (140)	7.5" (191)	3.5" (89)	12" (305)	1.5" (38)	.75" (19)	2.5" (64)	.5" (13)	.63" (16)	.5" (13)	.63" (16)	12 (5.4)



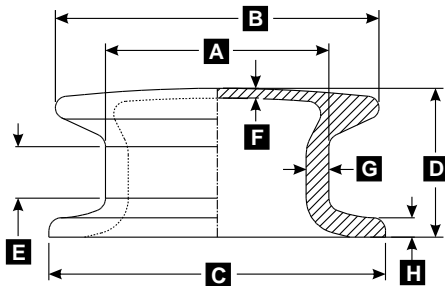
MODEL	DESCRIPTION	PART #	DIMENSIONS IN INCHES (MM)						LBS (KGS)	
			A	B	C	D	E	F		G
UMC-K12A	KEVEL, CLEAT 12" SMALL BASE	08720-301A	2.5" (64)	5" (127)	3.5" (89)	12" (305)	3.5" (89)	1.38" (35)	.88" (22)	7.6 (3.4)



MODEL	DESCRIPTION	PART #	DIMENSIONS IN INCHES (MM)							LBS (KGS)	
			A	B	C	D	E	F	G		H
UMC-518	KEVEL, 18"	02720-301A	5.5" (140)	9" (2904)	5" (127)	18" (457)	2.88" (73)	1" (25)	4.75" (121)	.88" (22)	34 (15.4)

Castings

### Button Chocks ASTM A27-70-36 Cast Steel



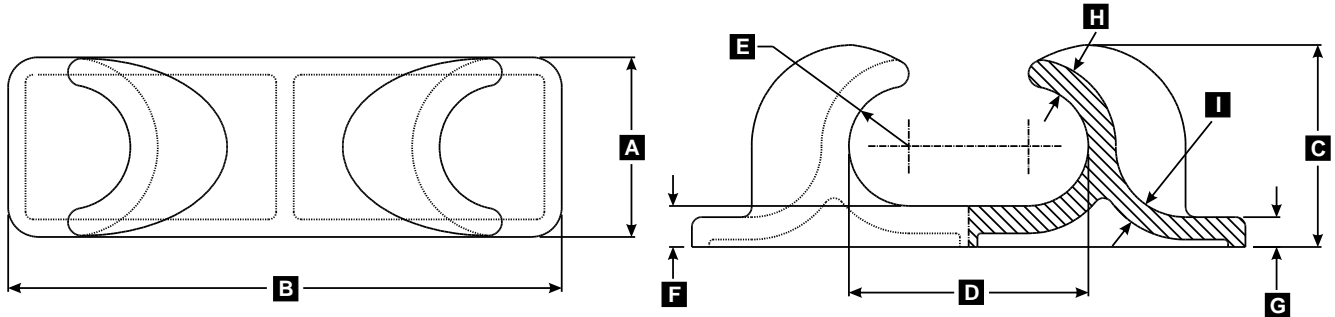
MODEL	DESCRIPTION	PART #	DIMENSIONS IN INCHES (MM)							LBS (KGS)	
			A	B	C	D	E	F	G		H
UMC-192	BUTTON CHOCK, 6"	01160-301A	6" Ø (152)	8.5" Ø (216)	12" Ø (305)	4.13" (181)	1.13" R (105)	.75" (89)	.75" (19)	.52" (13)	38 (17)
UMC-473	BUTTON CHOCK, 8"	01180-301A	8.6" Ø (218)	12.5" Ø (318)	13" Ø (330)	5.75" (146)	2" (51)	.38" (10)	.88" (22)	.75" (19)	75 (34)
UMC-185	BUTTON CHOCK, 10"	01170-301A	10" Ø (254)	15" Ø (381)	17" Ø (432)	8.5" (216)	N/A (N/A)	.5" (13)	1" (25)	.63" (16)	144 (65)



# Universal Motion Components

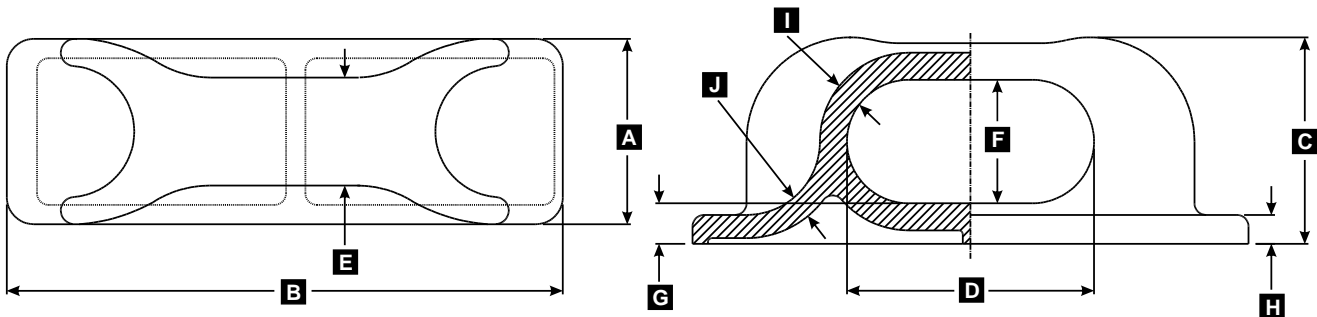
## Marine Hardware Division

### Open Chocks ASTM A27-70-36 Cast Steel



MODEL	DESCRIPTION	PART #	DIMENSIONS IN INCHES (MM)									LBS (KGS)
			A	B	C	D	E	F	G	H	I	
UMC-485	OPEN CHOCK, 9"	07870-301A	9" (229)	27.75" (705)	10.13" (257)	12" (305)	3" R (76)	2.06" (52)	1.5" (38)	1.375" (35)	1.125" (29)	176 (80)
UMC-489	OPEN CHOCK, 12"	06242-301A	12" (305)	36" (914)	13.38" (340)	16" (406)	4" R (101)	2.63" (67)	2.63" (67)	1.75" (44)	1.5" (38)	435 (197)

### Closed Chocks ASTM A27-70-36 Cast Steel



MODEL	DESCRIPTION	PART #	DIMENSIONS IN INCHES (MM)										LBS (KGS)
			A	B	C	D	E	F	G	H	I	J	
UMC-480	CLOSED CHOCK, 9"	04610-301A	9" (229)	27.75" (705)	10.13" (257)	12" (305)	5.25" (133)	6" (152)	2.06" (52)	1.5" (38)	1.375" (35)	1.125" (29)	176 (80)
UMC-490	CLOSED CHOCK, 12"	06240-301A	12" (305)	36" (914)	13.38" (340)	16" (406)	7" (178)	8" (203)	2.63" (67)	1.88" (48)	1.75" (44)	1.5" (38)	455 (206)
UMC-14	CLOSED CHOCK, 14"	06241-301A	14" (356)	42" (1066)	15.63" (397)	18.75" (476)	8.17" (208)	9.38" (239)	3.06" (78)	2.19" (56)	2" (51)	1.75" (44)	725 (329)

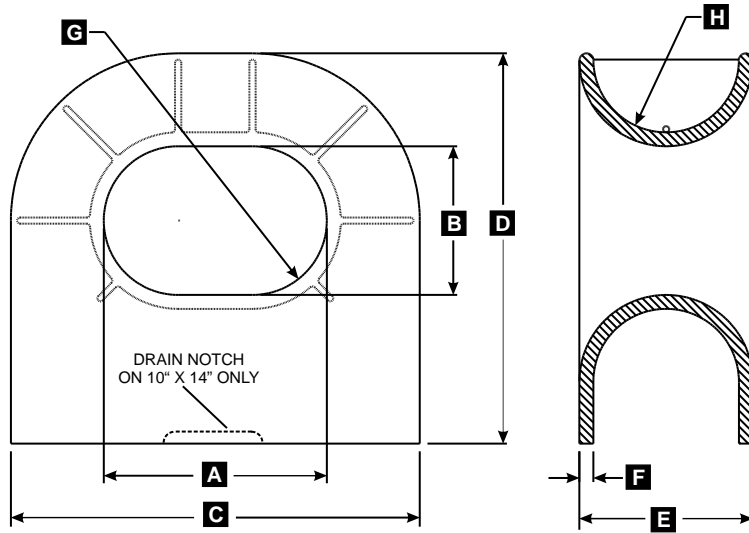
Castings



# Universal Motion Components

## Marine Hardware Division

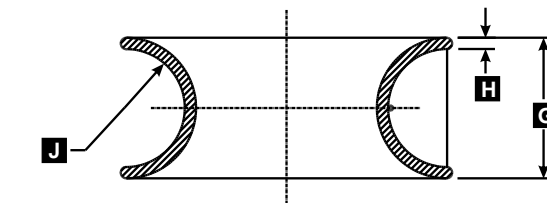
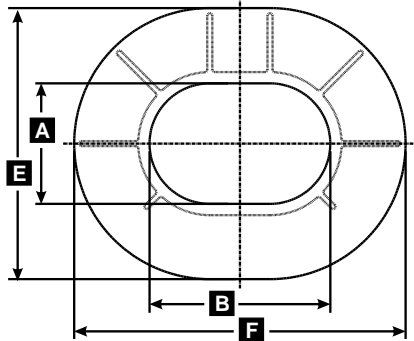
### Panama Chocks ASTM A27-70-36 Cast Steel



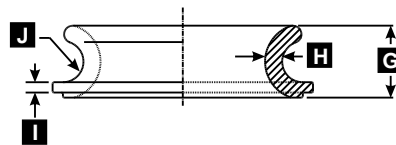
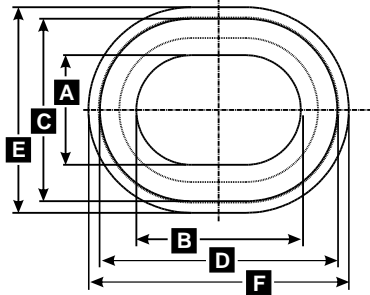
MODEL	DESCRIPTION	PART #	DIMENSIONS IN INCHES (MM)								LBS (KGS)
			A	B	C	D	E	F	G	H	
UMC-1014	PANAMA CHOCK, 10" X 14"	08370-301A	10" (152)	14" (210)	28" (305)	27.25" (181)	14" (105)	.75" (89)	5" R (19)	5.5" R (13)	335 (17)
UMC-1218	PANAMA CHOCK, 12" X 18"	08372-301A	12" (218)	18" (318)	33" Ø (330)	31.5" (146)	14" (51)	1.13" (10)	6" R (22)	5.88" R (19)	583 (34)

Castings

### Mooring Eyes ASTM A27-70-36 Cast Steel



UMC-1218E - Mooring Eye 12" x 18"



UMC-M812 - Mooring Eye 8" x 12"

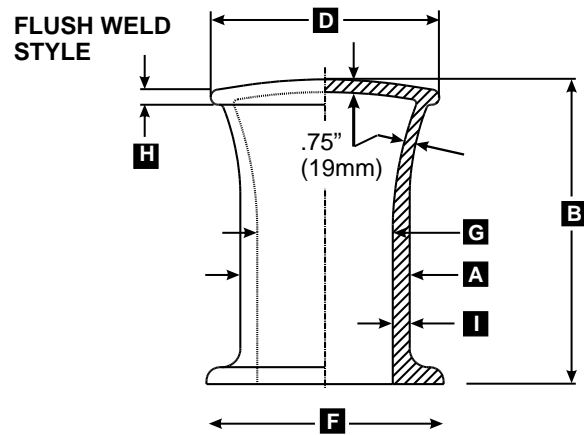
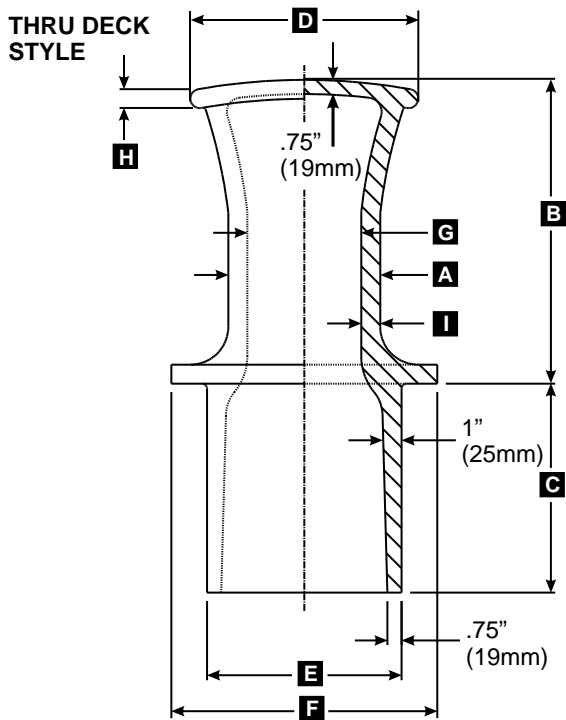
MODEL	DESCRIPTION	PART #	DIMENSIONS IN INCHES (MM)								LBS (KGS)		
			A	B	C	D	E	F	G	H		I	J
UMC-1218E	MOORING EYE 12X18"	08371-301A	12" (229)	18" (705)	N/A	N/A	27" (133)	33" (152)	14" (52)	1.13" (38)	N/A	5.88" R (29)	467 (80)
UMC-M812	MOORING EYE 8X12"	08750-301A	8" (305)	12" (914)	13.31" (340)	19" (483)	15" (178)	17.5" (203)	5.25" (67)	1.25" (48)	.75" (44)	1.5" R (38)	102 (206)



# Universal Motion Components

## Marine Hardware Division

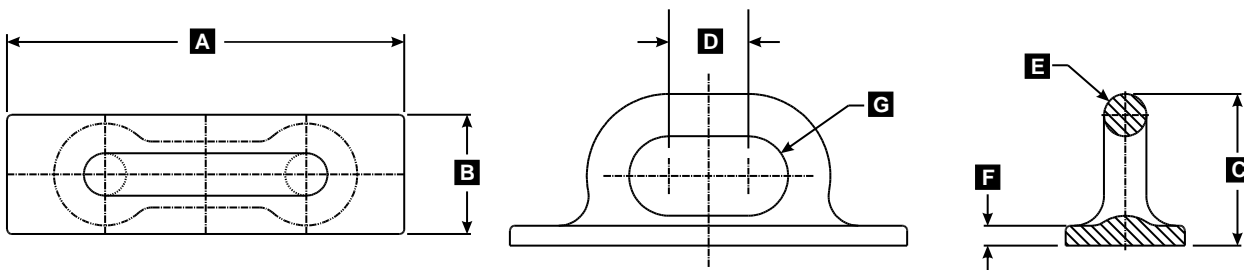
### Single Bitts ASTM A27-70-36 Cast Steel



MODEL	DESCRIPTION	STYLE	PART #	DIMENSIONS IN INCHES (MM)									LBS (KGS)
				A	B	C	D	E	F	G	H	I	
UMC-492	SINGLE BITT 8" SQUARE BASE	THRU DECK HEAVY DUTY	03720-301A	8" Ø (203)	21" (533)	12" (305)	12" Ø (305)	9.63" Ø (245)	14" (356)	5" Ø (127)	1" (25)	1.5" (38)	370 (168)
UMC-530	SINGLE BITT 8" ROUND BASE	THRU DECK	08000-301B	8" Ø (203)	16" (406)	11" (279)	12" Ø (305)	10.25" Ø (260)	14" Ø (356)	6" (152)	1" (25)	1" (25)	260 (117)
UMC-SB10-T	SINGLE BITT 10" ROUND BASE	THRU DECK	01142-301A	10" Ø (254)	18" (457)	12" (305)	13.5" Ø (343)	10" Ø (254)	14" Ø (356)	8" (203)	1.46" (37)	1" (25)	293 (132)
UMC-SB10	SINGLE BITT 10" ROUND BASE	FLUSH WLD	01140-301A	10" Ø (254)	18" (457)	N/A	13.5" Ø (343)	N/A	14" Ø (356)	8" (203)	1.46" (37)	1" (25)	190 (86)

Castings

### D-Rings ASTM A27-70-36 Cast Steel



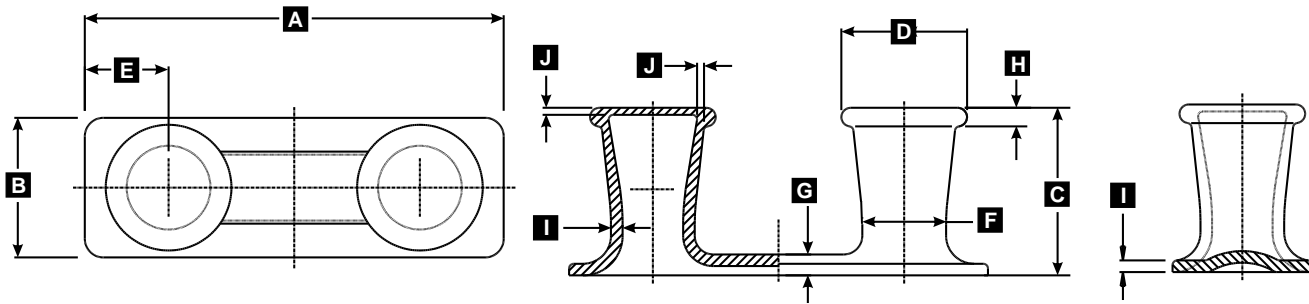
MODEL	DESCRIPTION	PART #	DIMENSIONS IN INCHES (MM)							WEIGHT
			A	B	C	D	E	F	G	
UMC-196	D-RING	01190-301A	20" (508)	6" (152)	7.63" (194)	4" (102)	2.13" Ø (54)	1" (25)	2" R (51)	60 (27)



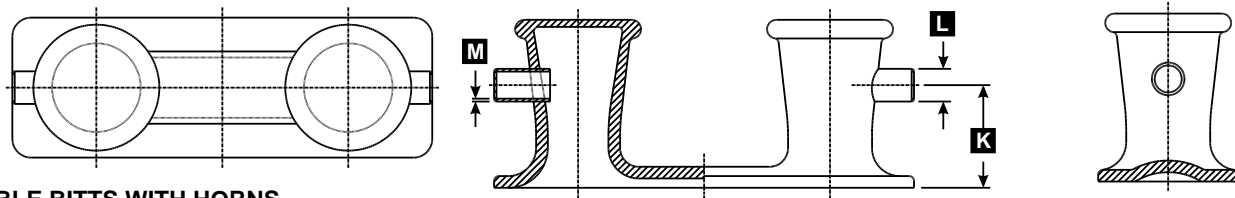
# Universal Motion Components

## Marine Hardware Division

### Double Bitts ASTM A27-70-36 Cast Steel



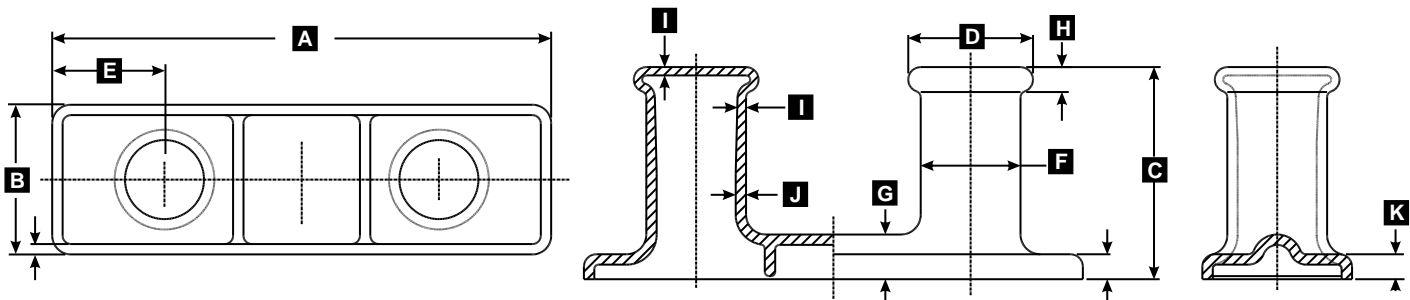
MODEL	DESCRIPTION	PART #	DIMENSIONS IN INCHES (MM)										LBS (KGS)
			A	B	C	D	E	F	G	H	I	J	
UMC-2	DOUBLE BITT 8"	01110-301A	40" (1016)	14" (336)	16" (406)	11" Ø (279)	8" (203)	7" Ø (177)	2" (51)	2" (51)	1.25" (32)	.72" (18)	320 (145)
UMC-40	DOUBLE BITT 10"	01120-301A	45" (1143)	15" (381)	18" (457)	13.5" Ø (343)	9" (228)	9" Ø (228)	2.25" (57)	2" (51)	1.25" (32)	.75" R (19)	574 (260)



DOUBLE BITTS WITH HORNS

MODEL	DESCRIPTION	PART #	DIMENSIONS IN INCHES (MM)			LBS (KGS)	
			K	L	M		
UMC-2A	DOUBLE BITT 8" WITH HORNS	04200-301A	SEE DIMENSIONS FOR UMC-2 ABOVE	10" (254)	3.5" Ø (89)	.3" (8)	331 (150)
UMC-40A	DOUBLE BITT 10" WITH HORNS	03760-301A	SEE DIMENSIONS FOR UMC-2 ABOVE	11" (279)	3.5" Ø (89)	.3" (8)	579 (262)

### Large Double Bitt ASTM A27-70-36 Cast Steel



MODEL	DESCRIPTION	PART #	DIMENSIONS IN INCHES (MM)										LBS (KGS)	
			A	B	C	D	E	F	G	H	I	J		K
UMC-491	DOUBLE BITT 12"	05970-301A	60" (1524)	18" (457)	25.5" (647)	15" (381)	13.5" (343)	12" Ø (305)	5.4" (137)	3" (83)	1" (25)	1.25" (32)	3" (76)	1045 (474)
UMC-14	DOUBLE BITT 14"	01121-301A	66" (1676)	21" (533)	26.25" (667)	17.5" (445)	13" (343)	14" (356)	5.7" (145)	3.5" (89)	1" (25)	1.5" (38)	3.5" (89)	1596 (724)

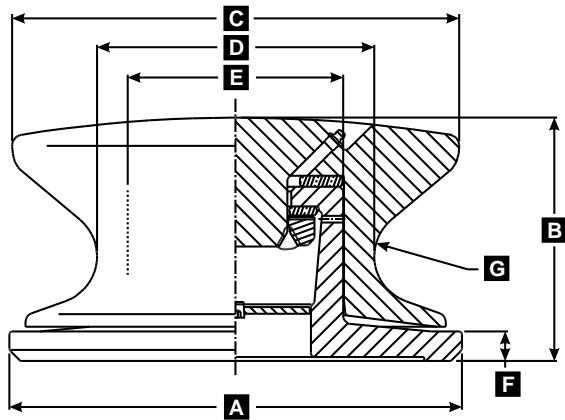
Castings



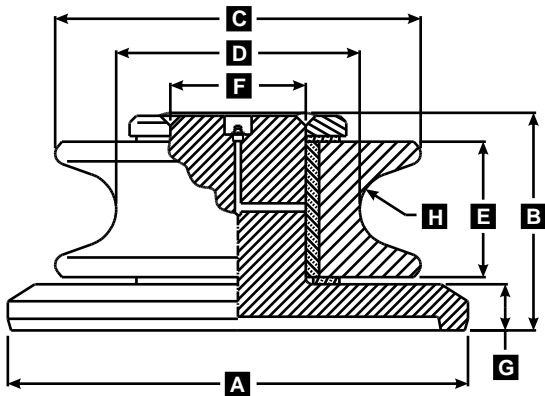
# Universal Motion Components

## Marine Hardware Division

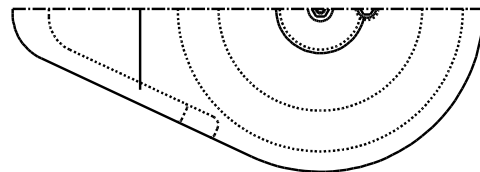
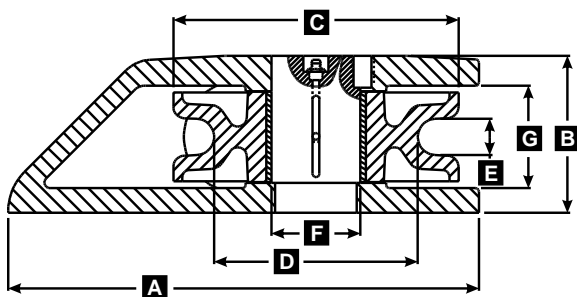
### Roller Buttons ASTM A27-70-36 Cast Steel



MODEL	DESCRIPTION	PART #	DIMENSIONS IN INCHES (MM)							LBS (KGS)
			A	B	C	D	E	F	G	
UMC-50	ROLLER BUTTON, WELDED 11"	08670-152A	12.5" Ø (317)	5.29" (134)	11" Ø (279)	8" Ø (203)	5.5" Ø (138)	1" (25)	.78" R (20)	100 (45)
UMC-75	ROLLER BUTTON, WELDED 12.5"	08671-152A	16.65" Ø (423)	6.8" (173)	12.5" Ø (316)	7.75" Ø (197)	6" Ø (152)	.83" (21)	1.33" R (34)	136 (62)
UMC-100	ROLLER BUTTON, WELDED 15.5"	08672-152A	14.86" Ø (377)	7.88" (200)	15" Ø (381)	9.25" Ø (235)	7" Ø (178)	1" (25)	1.56" R (40)	235 (107)



MODEL	DESCRIPTION	PART #	DIMENSIONS IN INCHES (MM)								LBS (KGS)
			A	B	C	D	E	F	G	H	
UMC-1048	ROLLER BUTTON WELDED	08674-101A	17" Ø (432)	8.03" (204)	13.5" Ø (343)	9" (229)	5" (127)	5" Ø (127)	1.7" (43)	1.38" R (35)	250 (113)



MODEL	DESCRIPTION	PART #	DIMENSIONS IN INCHES (MM)							LBS (KGS)
			A	B	C	D	E	F	G	
UMC-927	ROLLER CHOCK	08830-101A	13" (330)	4.33" (109)	7.88" Ø (194)	5.63" Ø (143)	1" (25)	2.44" Ø (62)	2.83" (72)	50 (23)

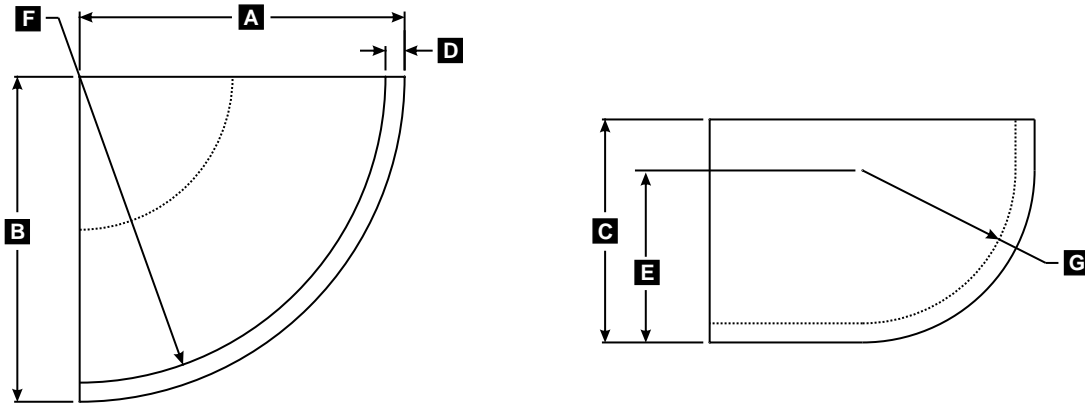
Castings



# Universal Motion Components

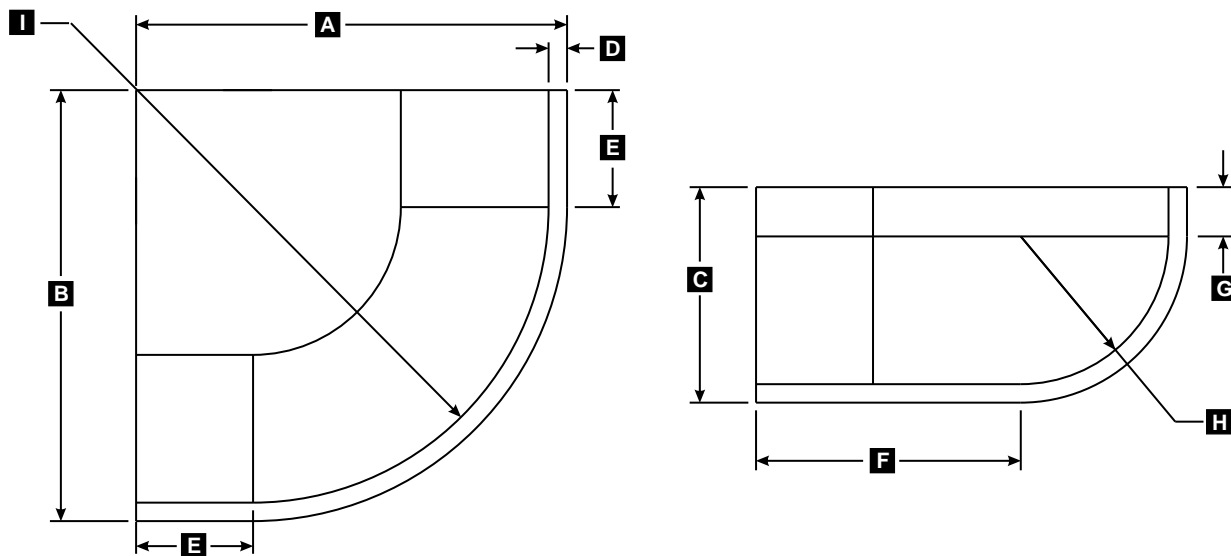
## Marine Hardware Division

### Barge Corner Square Small ASTM A27-70-36 Cast Steel



MODEL	DESCRIPTION	PART #	DIMENSIONS IN INCHES (MM)							LBS (KGS)
			A	B	C	D	E	F	G	
D12X6X4	CORNER CASTING 12" x 6" x 4" LH/RH	02802-302A	12.75" (32)	12.75" (32)	6.75" (17)	.75" (2)	4.75" (12)	12" R (30.4)	4" R (10)	47.5 (21.5)
D12X6X6	CORNER CASTING 12" x 6" x 6" LH/RH	02802-303A	12.75" (32)	12.75" (32)	8.75" (22)	.75" (2)	6.75" (17)	12" R (30.4)	6" R (15)	49 (22)

### Barge Corner Square Large ASTM A27-70-36 Cast Steel



MODEL	DESCRIPTION	STYLE	PART #	DIMENSIONS IN INCHES (MM)								LBS (KGS)	
				A	B	C	D	E	F	G	H		I
DF-486-6	CORNER CASTING LH/RH #6		02802-301A	8.75" (22)	8.75" (22)	8.75" (22)	.75" (2)	2" (5)	2" (5)	2" (5)	6" R (15)	6" R (15)	30.7 (14)
D12RA	CORNER CASTING LH/RH 6"R x 4"R x 16.75"LG		02802-304A	16.75" (42.5)	16.75" (42.5)	6.75" (17)	.75" (2)	4" (10)			4" R (10)	12" R (30.5)	76 (34)
D12RB	CORNER CASTING LH/RH 6"R x 8.75"R x 17.5"LG		02802-305A	17.5" (44.5)	17.5" (44.5)	8.75" (22)	.75" (2)	4.75" (12)	10.75" (27)	2" (5)	6" (15)	12" R (30.4)	89 (40)

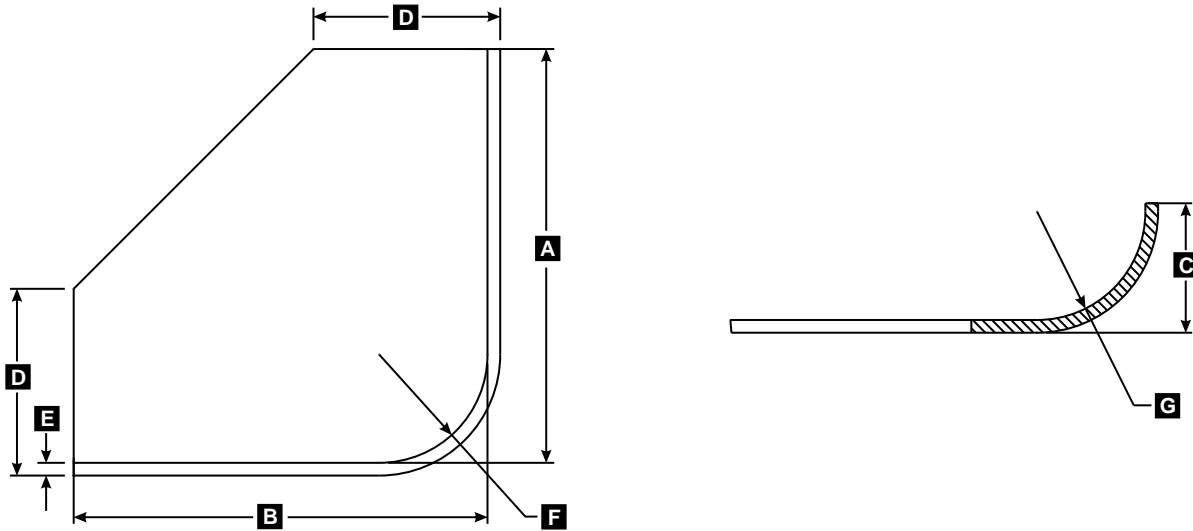
Castings



# Universal Motion Components

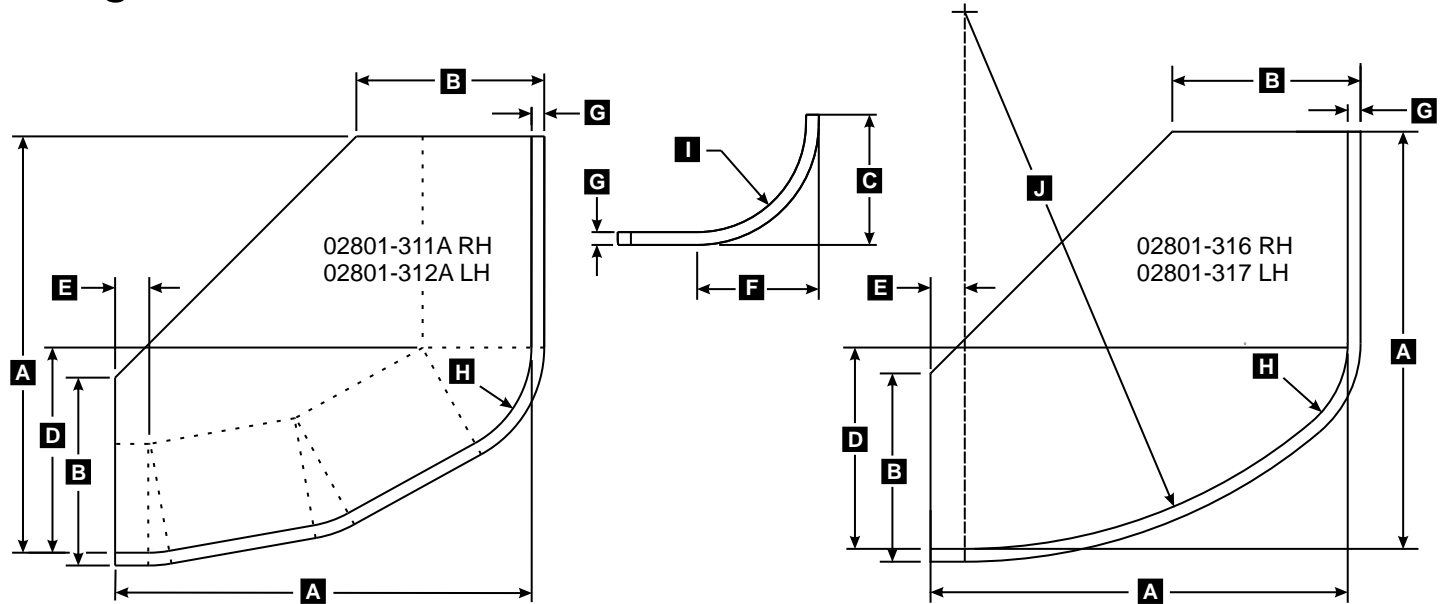
## Marine Hardware Division

### Barge Corner Square X-Large ASTM A27-70-36 Cast Steel



MODEL	DESCRIPTION	PART #	DIMENSIONS IN INCHES (MM)							LBS (KGS)
			A	B	C	D	E	F	G	
E-2682-S	CORNER CASTING LH/RH 24"	02802-302A	24.375" (62)	24.375" (62)	7.625" (19)	11" (28)	.75" (2)	6.375" R (16.2)	6.375" R (16.2)	135 (61.2)

### Barge Corner LH/RH ASTM A27-70-36 Cast Steel



MODEL	DESCRIPTION	PART #	DIMENSIONS IN INCHES (MM)										LBS (KGS)
			A	B	C	D	E	F	G	H	I	J	
D-2401-S-RH	CORNER, CAST RIGHT HAND	02801-311A	24.38" (61.9)	11" (28)	7.625" (19.4)	12" (30.4)	2" (5)	7.12" (18)	.75" (2)	6.375" (16.2)	6.375" (16.2)	N/A	145 (65.7)
D-2401-S-LH	CORNER, CAST LEFT HAND	02801-312A	24.38" (61.9)	11" (28)	7.625" (19.4)	12" (30.4)	2" (5)	7.12" (18)	.75" (2)	6.375" (16.2)	6.375" (16.2)	N/A	145 (65.7)
E-2656-S-RH	CORNER, CAST RIGHT HAND	02801-316A	24.38 (61.9)	11" (28)	7.625" (19.4)	12" (30.4)	2" (5)	7.12" (18)	.75" (2)	6" (16.2)	6.375" (16.2)	31.4" R (80)	135 (61.2)
E-2656-S-LH	CORNER, CAST LEFT HAND	02801-317A	24.38 (61.9)	11" (28)	7.625" (19.4)	12" (30.4)	2" (5)	7.12" (18)	.75" (2)	6" (16.2)	6.375" (16.2)	31.4" R (80)	135 (61.2)

Castings