

QUALITY IRRIGATION
PRODUCTS

ISO 9001:2000 CERTIFIED

2920 Airway Ave, Costa Mesa, Ca. 92626
phone: 714.437.9600 fax: 714.437.9700



BT - 4B TOWABLE HUB

Heavy duty / Extended length



PIN BRACKET KIT

SOLD SEPARATELY

THE NEXT GENERATION

OF THE BOLT - ON TOWABLE HUB.

Evaluation Specifications

Towable Hub

- * **NEW:** Extended length design provides greater bearing spacing, allowing for increased load requirements.
- * Converts standard center-pivot final drives into towables.
- * Bearing pre-load is set using a SAE lock nut and washers.
- * Heavy duty cast steel shaft and cast iron hub.
- * Grease and pressure relief fittings included.

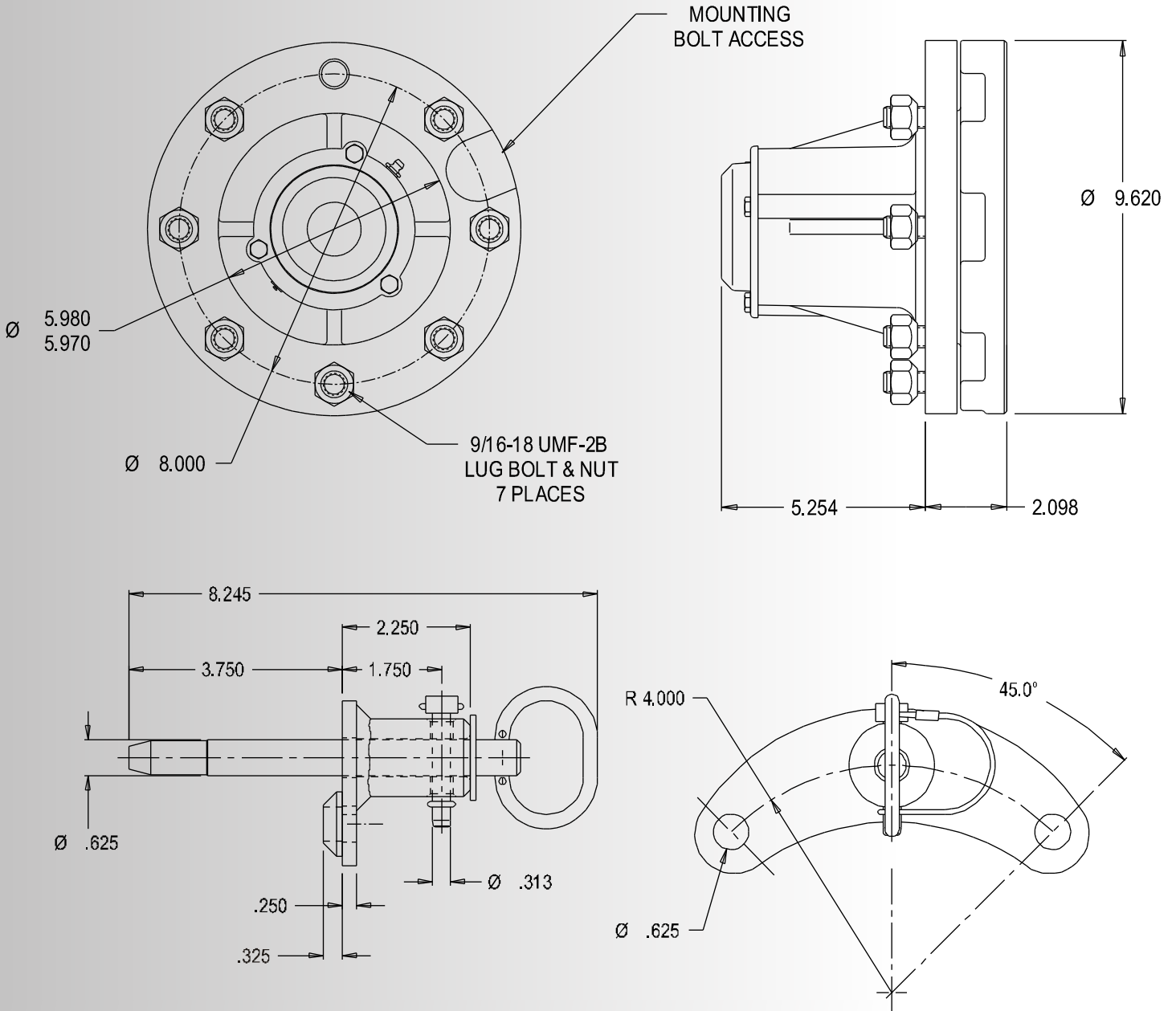
- * Bolt-in hub cap secured with three 1/4-20 bolts and sealed with silicone RTV.

Pin Bracket KIT

- * Designed to work with tow hubs & towable gearboxes.
- * High strength pin to reduce wear.
- * Heavy duty retainer clip.
- * Fits standard eight bolt rim.

CONTACT UMC AT SALES@UMCPRODUCTS.COM

Dimensional Drawing BT - 4B Towable Hub & Pin Bracket Assembly



CONTACT UMC AT SALES@UMCPRODUCTS.COM



Universal Motion Components, Co. Inc.
2920 Airway Ave, Costa Mesa, Ca. 92626
Phone: 714.437.9600 Fax: 714.437.9700
Web: <http://www.umcproducts.com>
E-mail: sales@umcproducts.com