

QUALITY IRRIGATION  
PRODUCTS

ISO 9001:2000 CERTIFIED

2920 Airway Ave, Costa Mesa, Ca. 92626  
phone: 714.437.9600 fax: 714.437.9700



FINAL DRIVE GEARBOXES



Model Numbers:

- ➔ 740 - U 50:1
- ➔ 740 -UV 52:1

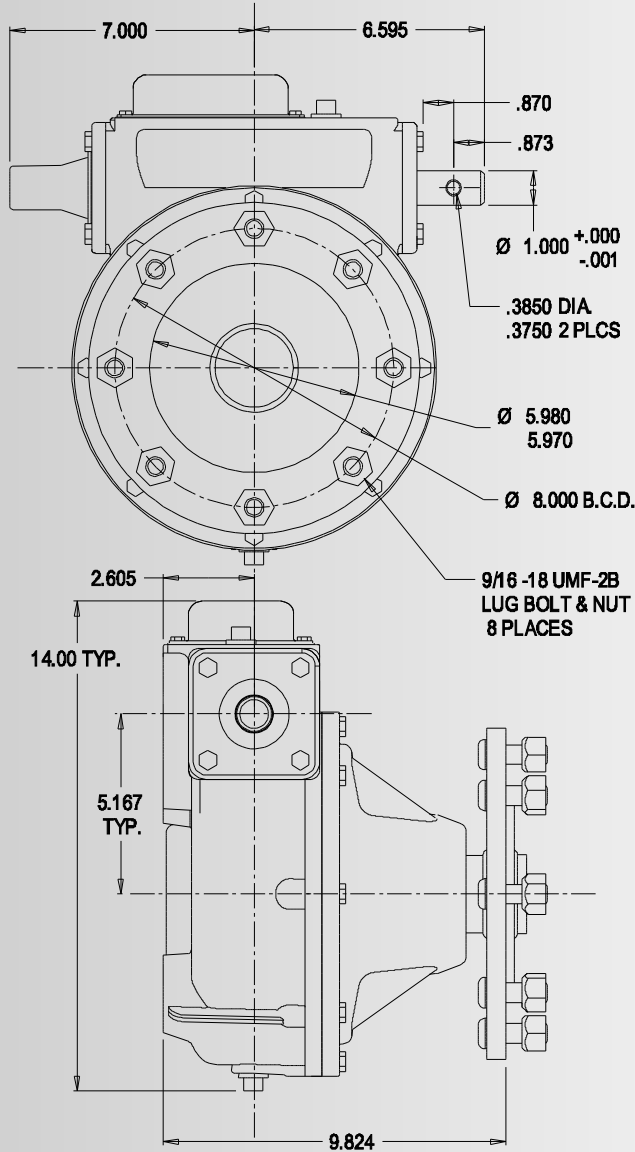
Evaluation Specification:

- & New Dual output seals standard.
- & Larger input bearings and reinforced housing.
- & Stainless steel expansion chamber.
- & Universal mount bolt pattern.
- & Full cycle expansion chamber; bellows-type expansion diaphragm.
- & Tapered roller bearings.
- & 50:1 worm gear ratio, UV 52:1 : Various over-hung load capacities.
- & High strength cast iron bolt-on end caps.
- & Input shafts fitted with external UV resistant dust seals.
- & Dual input seals.
- & Includes rib neck carriage bolts with wheel nuts.
- & Each gearbox filled with extreme pressure, multi-purpose gear oil.
- & Top oil fill provision.
- & Each unit date stamped.
- & High strength steel worm and output shaft.
- & Input shaft guard included.

CONTACT UMC AT SALES@UMCPRODUCTS.COM

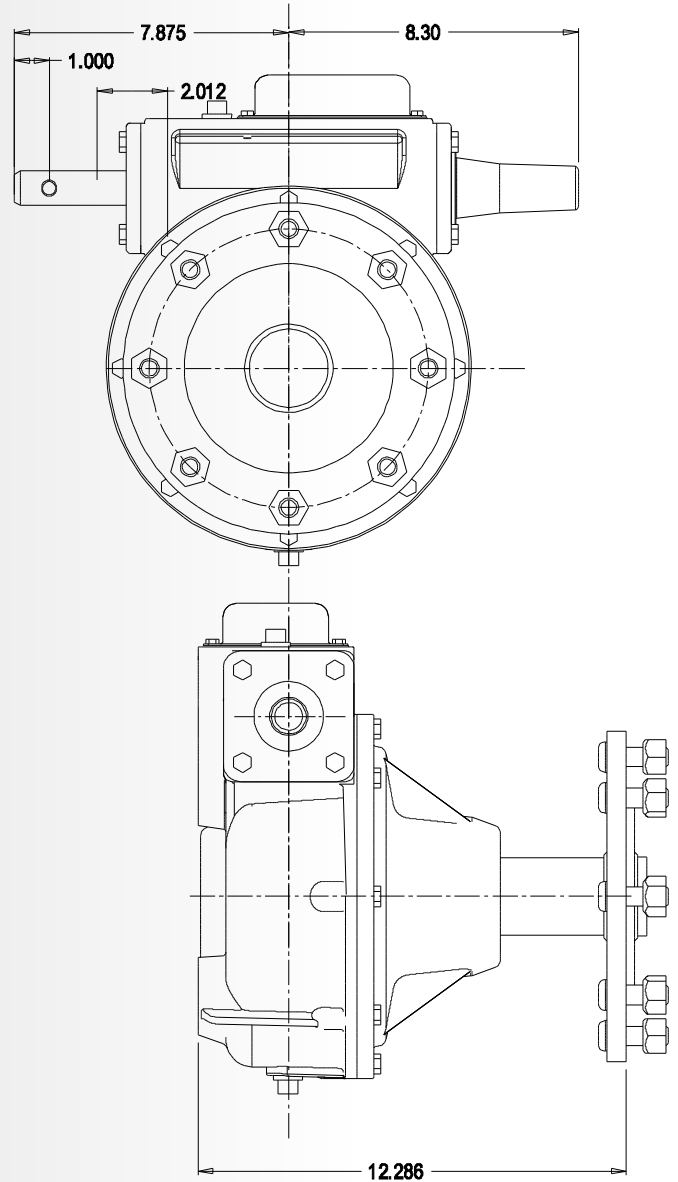
Dimensional Drawing  
Final Drive Gearboxes

Model: 740-U



Universal mounting bolt pattern fits most Lindsay, Reinke, and Lockwood systems.

Model: 740-UV



Mounting bolt pattern fits Valmont systems.

CONTACT UMC AT SALES@UMCPRODUCTS.COM



Universal Motion Components, Co. Inc.  
2920 Airway Ave, Costa Mesa, Ca. 92626  
Phone: 714.437.9600 Fax: 714.437.9700  
Web: <http://www.umcproducts.com>  
E-mail: [sales@umcproducts.com](mailto:sales@umcproducts.com)